

CILS-1500

LED CALIBRATION IN-LINE SYSTEM



The CILS-1500 is the perfect solution for Light Calibration of LED's.

Designed to your exact needs, it makes it easy to calibrate a large number of LED's, in a variety of large panels and future expandability.

Wide range of PCB dimensions, high handling speed, fast and easy setup, facilitated product changeover, flexible and adapted to different electronic test technologies, the CILS-1500 will be the best choice for your In Line testing needs.

*Calibration: Correction of slight variations in colour and intensity between LED's among production.

- Dual Heads working in parallel
- Multiple Optical Microdpheres
- Multiple Linear Power Source lines
- Multiple Independent LIN BUS
- NI TestStand Sw architecture
- MS SQL Server Traceability

We encourage the constant **exchange of ideas and best practices** with our customers and partners.

Our projects provide the **best engineering** solutions for specific test needs integrated in our **in-line Handling Systems**.

Test

- LED's Calibration
- ICT/MDA (In Parallel with XILS800)
- ISP&FCT(In Parallel with XILS600)

Product Communications

- LIN
- CAN
- CANBUS-FD
- MeLiBu

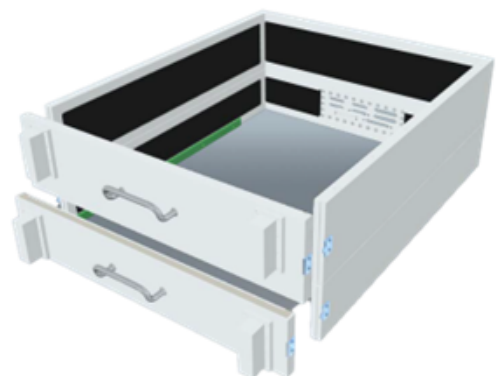




CILS-1500

RGB CALIBRATION

Typical application	RGB CALIBRATION
Max. PCB size	510X60 mm
Min. PCB width	100 mm
Component top side clearance	30 mm
Component bottomside clearance	50 mm
Drive force (nominal)	1,7 kN
Recommended/Max test points	600
Handling time (machine cycle)	Approx. 6 sec.
Fixture exchange time	<3 min.
Dimensions (length)	1500 mm
Dimensions (width)	1500 mm
Dimensions (height)	2300 mm
Weight	1000 kg.
Rackeable/Instrumentation space	General purpose Calibration RGB (10U)
Interface type	Pylon Block
Machine control	Beckhoff
Machine communication	Socket communication
Electrical power	3X00Vac // 50-60Hz.
Pneumatic requirements	6 Bar.
CE approved	Yes
Fixtures	



Innovation, Quality and **Passion for Engineering.**



01 SPAIN | 02 PORTUGAL | 03 GERMANY | 04 MEXICO | 05 MALAYSIA | 06 INDIA | 07 CHINA | 08 MOROCCO



+34 91 890 46 14
info@eiit.com
www.eiit.com

EIIT SA.

Camino Robledo de Chavela, 9-B
28210 Valdemorillo - Madrid
Spain

Aeronautics 

Special Test Equipment 

Automation Systems 

Solutions Equipment & Partnership 



empresas
del metal
de madrid

